

Table of Contents

General information.....1
 Operation modes.....1
 Drivers Installation.....1
 Software Installation.....2
 Software Activation (standalone Language Pack Editor dongle).....5
 Software Activation (addon for Infinity-Box dongle).....8
 Read dongle identification, serial number (S/N).....9

General information

Infinity-Box **Language Pack Editor** is a software for Language Pack and other content modification for MT62xx (MTK) CPU based models.

Infinity-Box corporate web site: <http://www.infinity-box.com/>
Infinity-Box Language Pack Editor web site: <http://www.language-editor.com/>
Infinity-Box Language Pack Editor download area: <http://www.language-editor.com/download/support@infinity-box.com>
 Sales department e-mail: support@infinity-box.com
 Technical support e-mail: lpe@infinity-box.com

Operation modes

Infinity-Box **Language Pack Editor** works in two modes:

- ✓ Addon for Infinity-Box dongle (activation payment required, contact to support@infinity-box.com)
- ✓ Standalone Language Pack Editor dongle that works with any Chinese flashing box

Each operation mode has exactly the same functionality for firmware editing operations, difference is in input and output files formats and in flasher software.

	Addon for Infinity-Box dongle:	Standalone Language Pack Editor dongle:
	existing Infinity-Box dongle should be activated for Language Pack Editor software usage	separate Language Pack Editor smart-card should be used
Input files format	<ul style="list-style-type: none"> ✓ Infinity-Box packed flash files ✓ plain binary (.bin) files 	<ul style="list-style-type: none"> ✓ plain binary (.bin) files
Output file format	<ul style="list-style-type: none"> ✓ Infinity-Box packed flash files 	<ul style="list-style-type: none"> ✓ plain binary (.bin) files
Flashing software	<ul style="list-style-type: none"> ✓ Infinity-Box Chinese Miracle software 	<p>Any flasher that accept plain binary (.bin) flash files:</p> <ul style="list-style-type: none"> ✓ Flashtool ✓ Spiderman ✓ MTK ✓ CPF ✓ other flashers for Chinese phones

Drivers Installation

Protection dongle (smart-card) drivers should be installed.

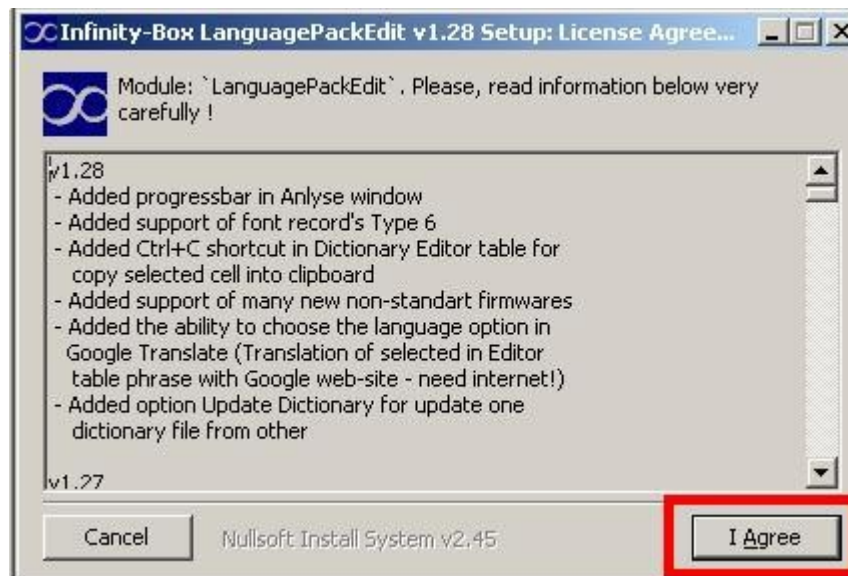
1. Visit <http://www.infinity-box.com/support.php>
2. Download and install drivers according to [I. Installation procedure](#) section

Software Installation

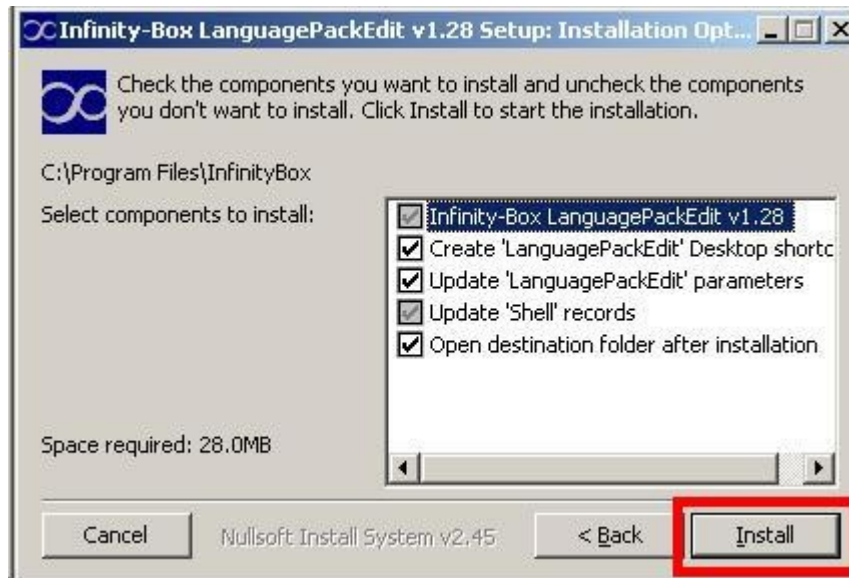
1. download software Installer: <http://www.language-editor.com/download/>



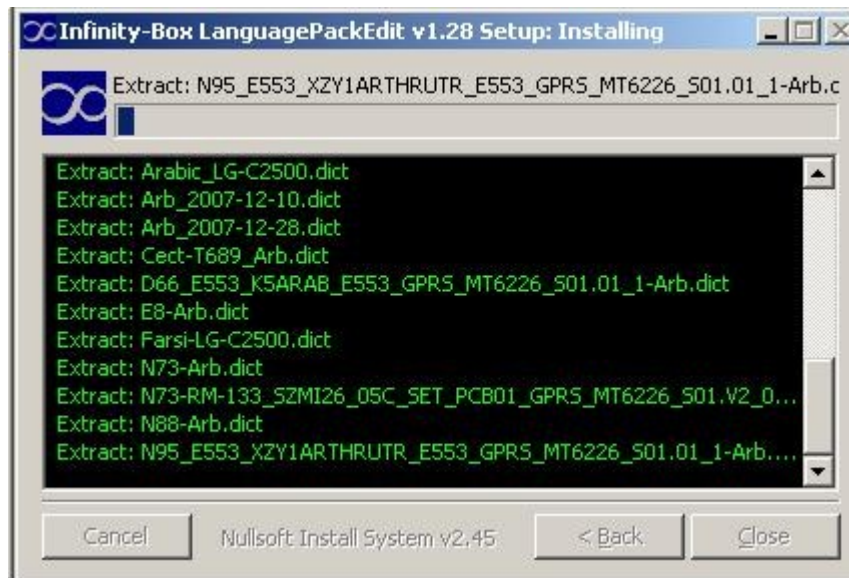
2. Run Installer and read list of latest changes and other important information. Press "Agree" button.



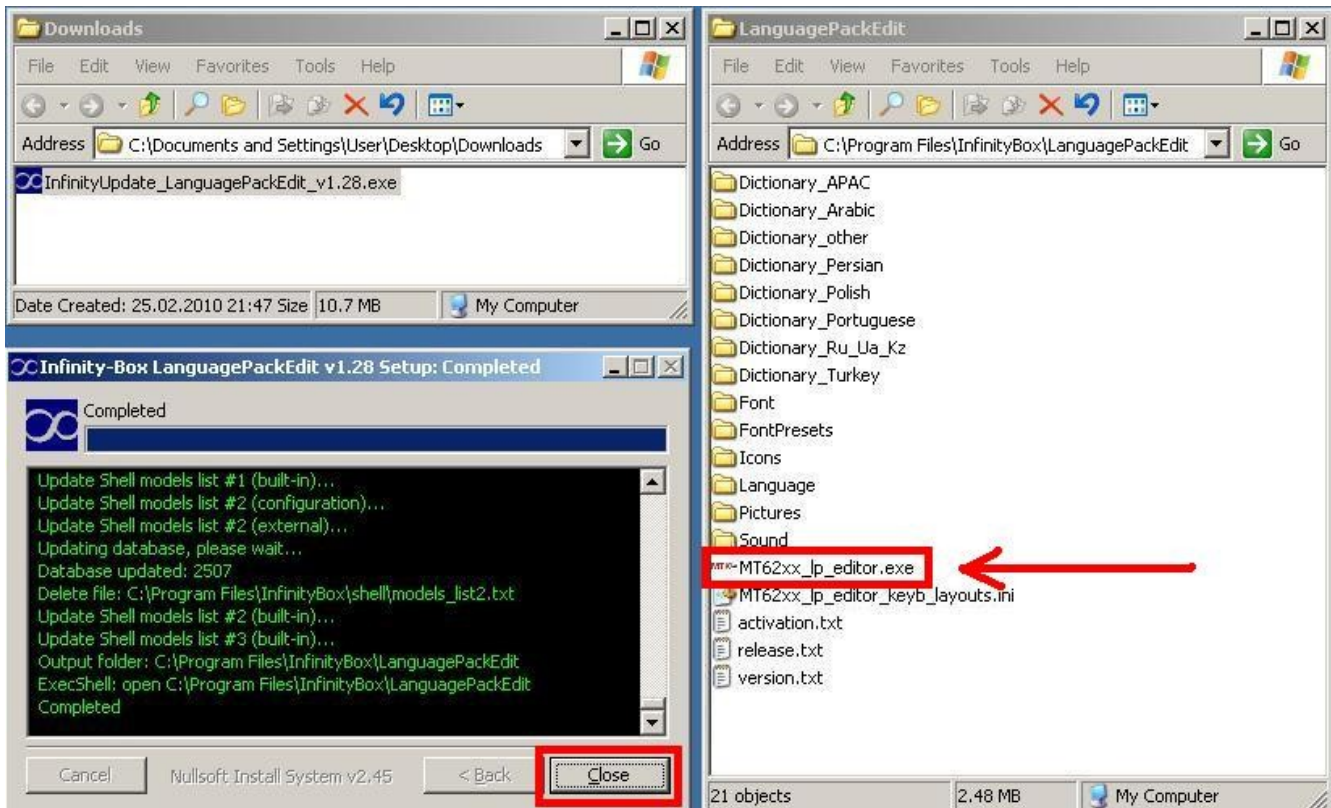
3. Check installation options, press "Install" button



4. Wait several seconds



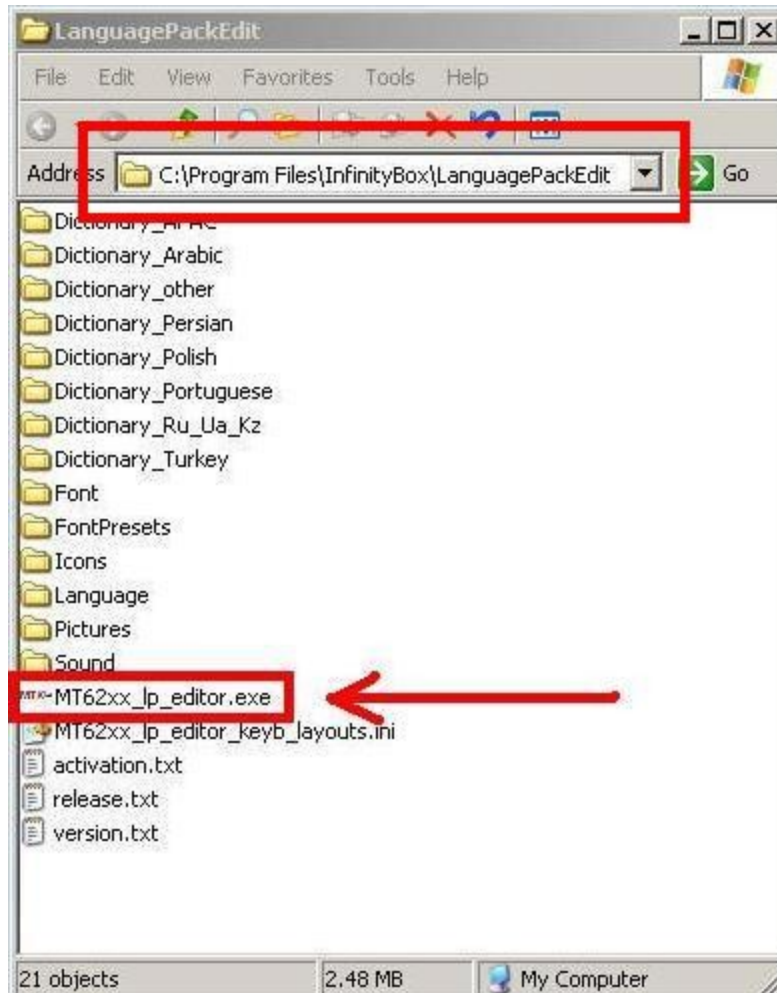
5. Finally you will see folder with software and Desktop shortcut



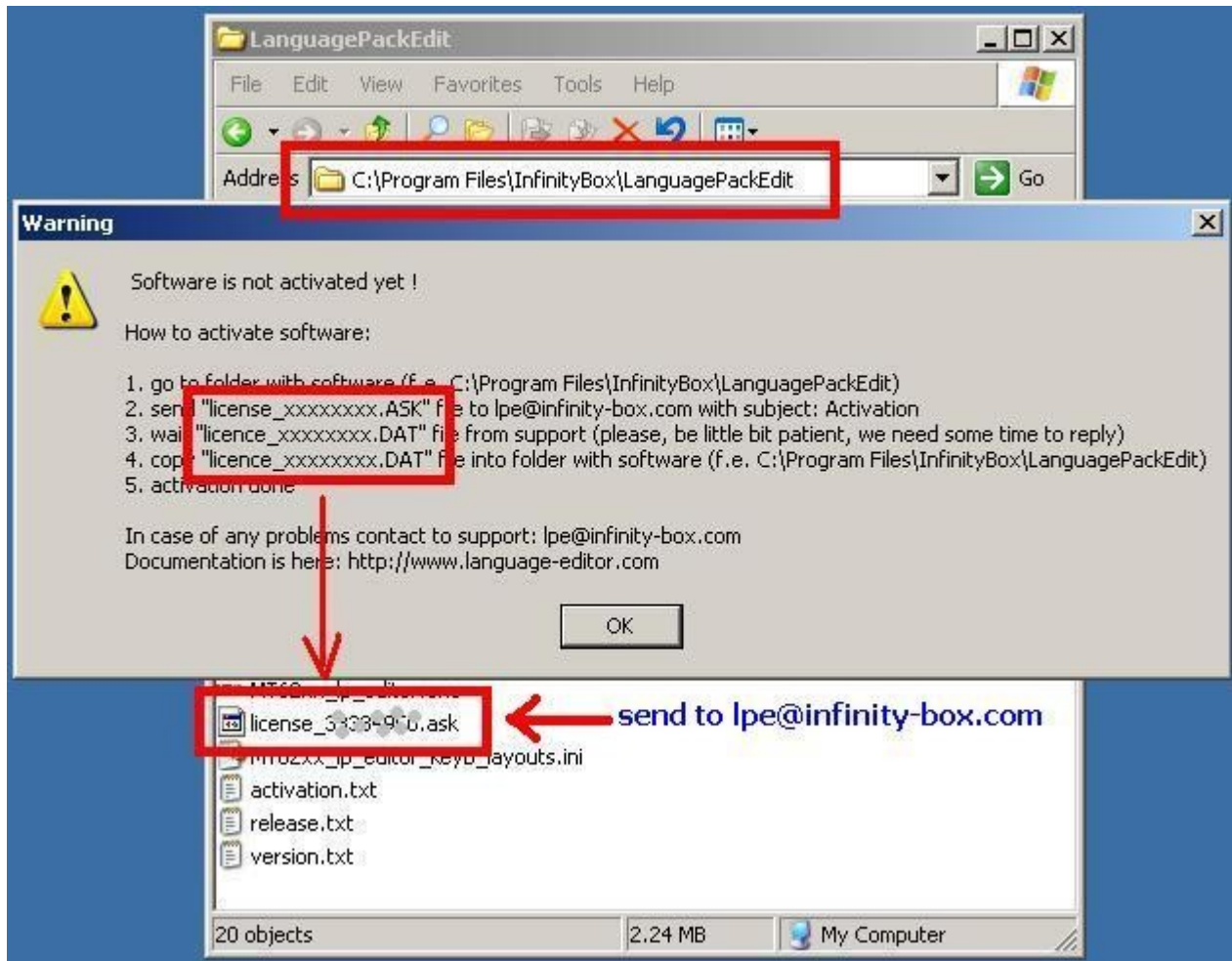
Software Activation (standalone Language Pack Editor dongle)

Software should be activated before use.

1. Run **Language Pack Editor** software

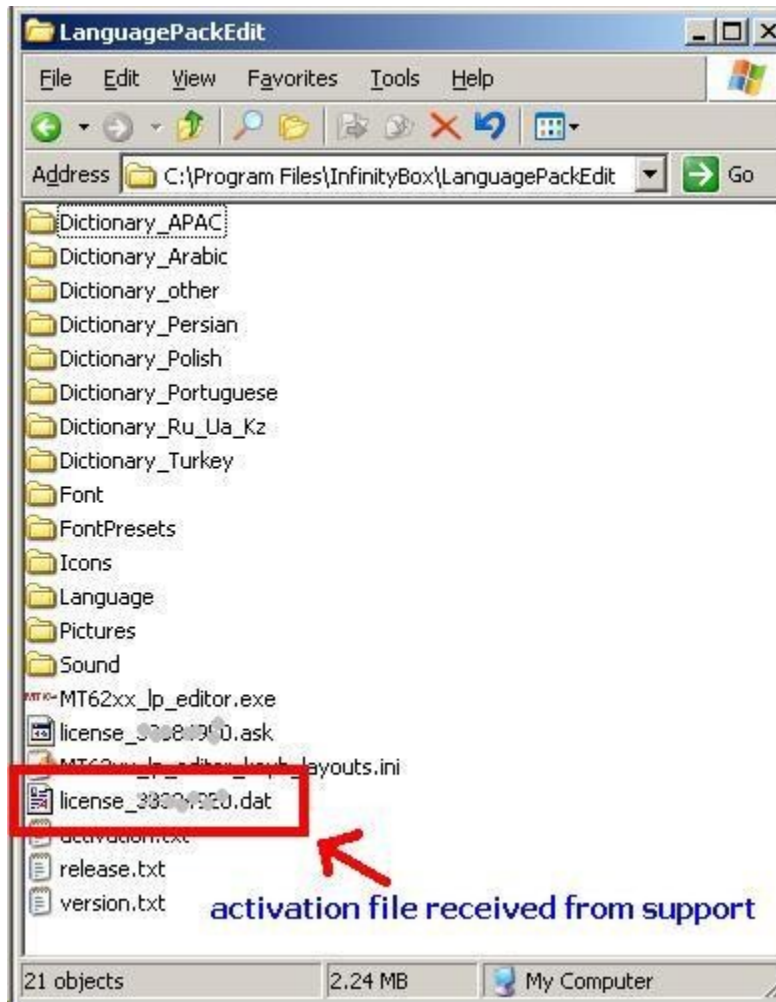


2. Activation ASK file will be created and instruction will be shown



- 3. Send **license_XXXXXXX.ask** key file to lpe@infinity-box.com
- 4. Wait some time, you will get **license_XXXXXXX.dat** activation file back

- 5. Copy activation **license_XXXXXXX.dat** file into folder with software



- 6. Activation done, software ready to work

Software Activation (addon for Infinity-Box dongle)

1. Run Infinity-Box [Dongle Manager](#) and make "Read dongle serial number (S/N)"
2. Send Infinity-Box S/N information to support@infinity-box.biz
3. Wait confirmation from support that your dongle activated
4. Run Infinity-Box [Dongle Manager](#) and upgrade your dongle firmware
5. Run Infinity-Box [Dongle Manager](#), read dongle S/N again and be sure that you have new option activated
6. Download and run [Language Pack Editor](#)
7. "**licence_XXXXXX.ask**" file will be created in folder with software
8. Send "**licence_XXXXXX.ask**" file to support@infinity-box.biz
9. Wait "**licence_XXXXXX.dat**" file from support
10. Copy "**licence_XXXXXX.dat**" file into folder with software
11. Software ready to work

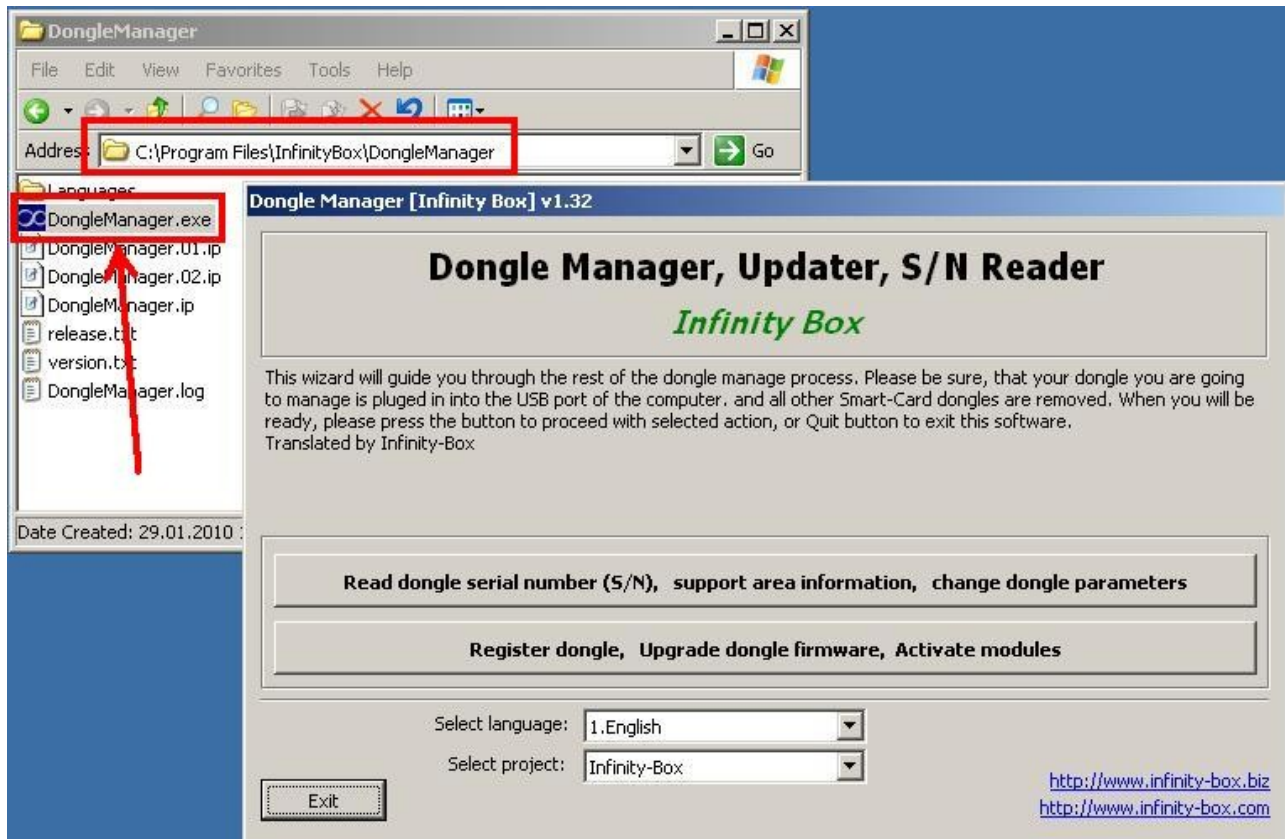
Dongle Manager: <http://www.infinity-box.com/download/index-1.php?dir=&file=DongleManager.rar>

Language Pack Editor: <http://www.language-editor.com/download/>

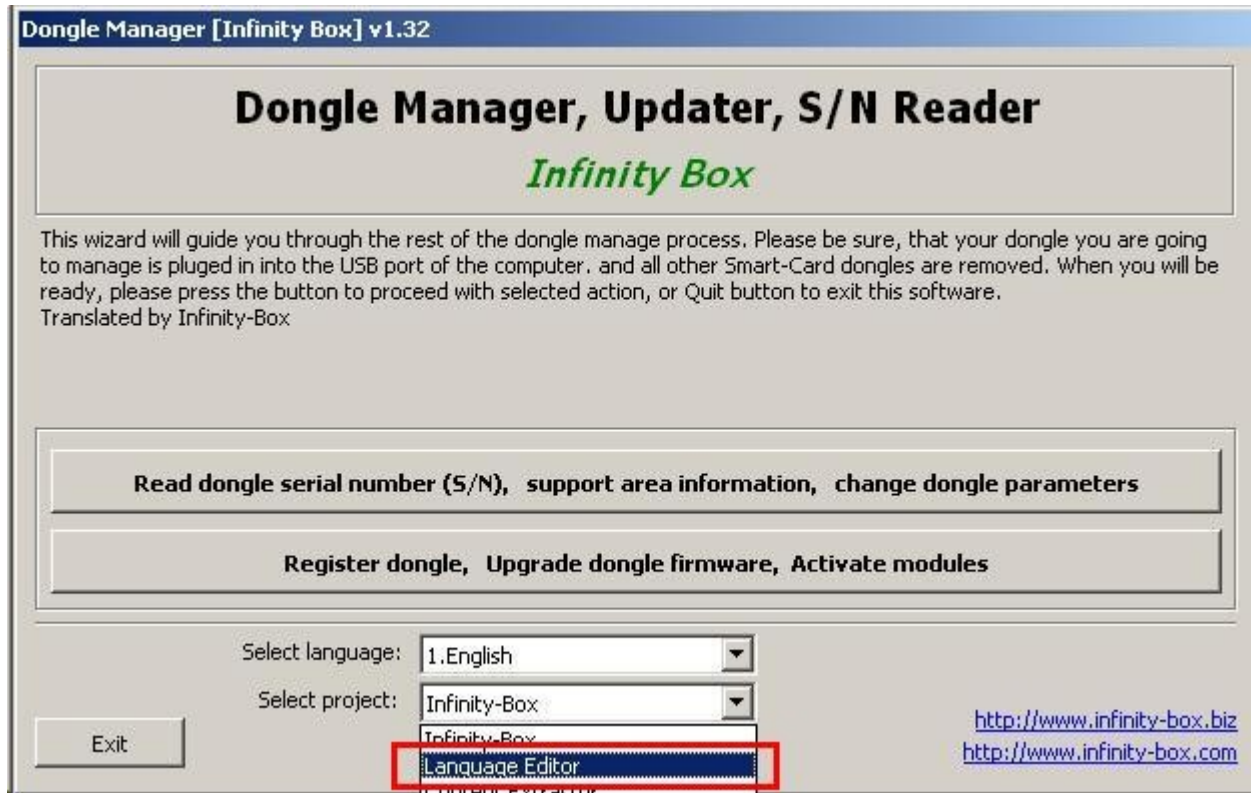
Read dongle identification, serial number (S/N)

In case of any problems with software and/or dongle functionality it is need to send information about your dongle identification data (serial number etc.) to support.

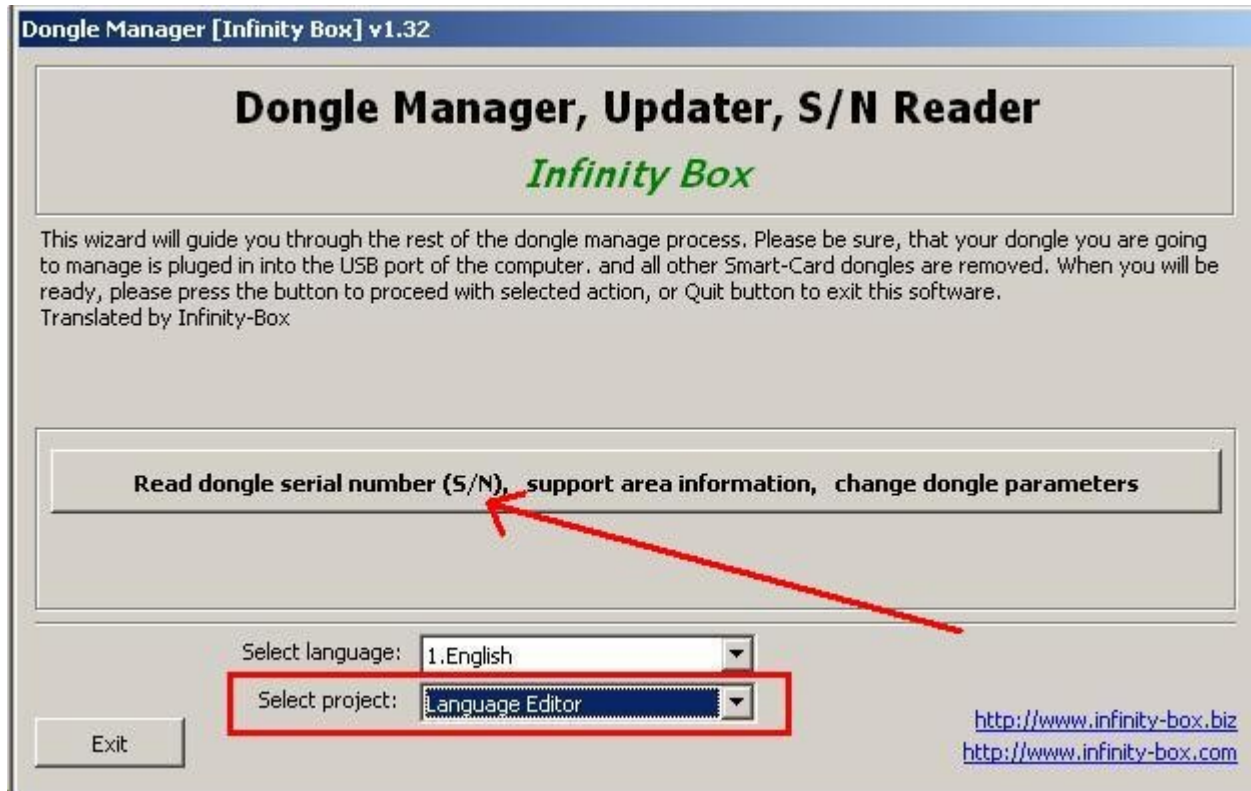
1. Download and run **Dongle Manager**: <http://www.infinity-box.com/support.php>



- 2. Select **Language Pack Editor** project



- 3. Press "Read dongle serial number (S/N)" button



4. Here is an example of dongle identification data

